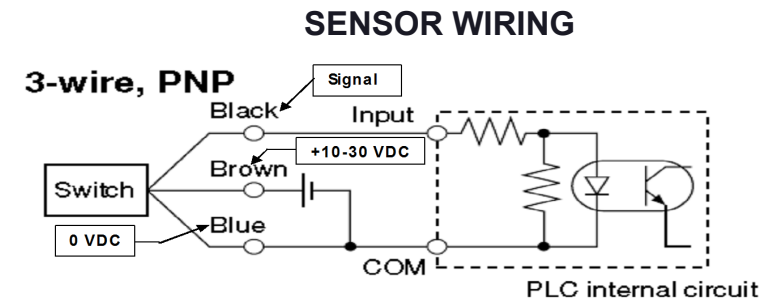
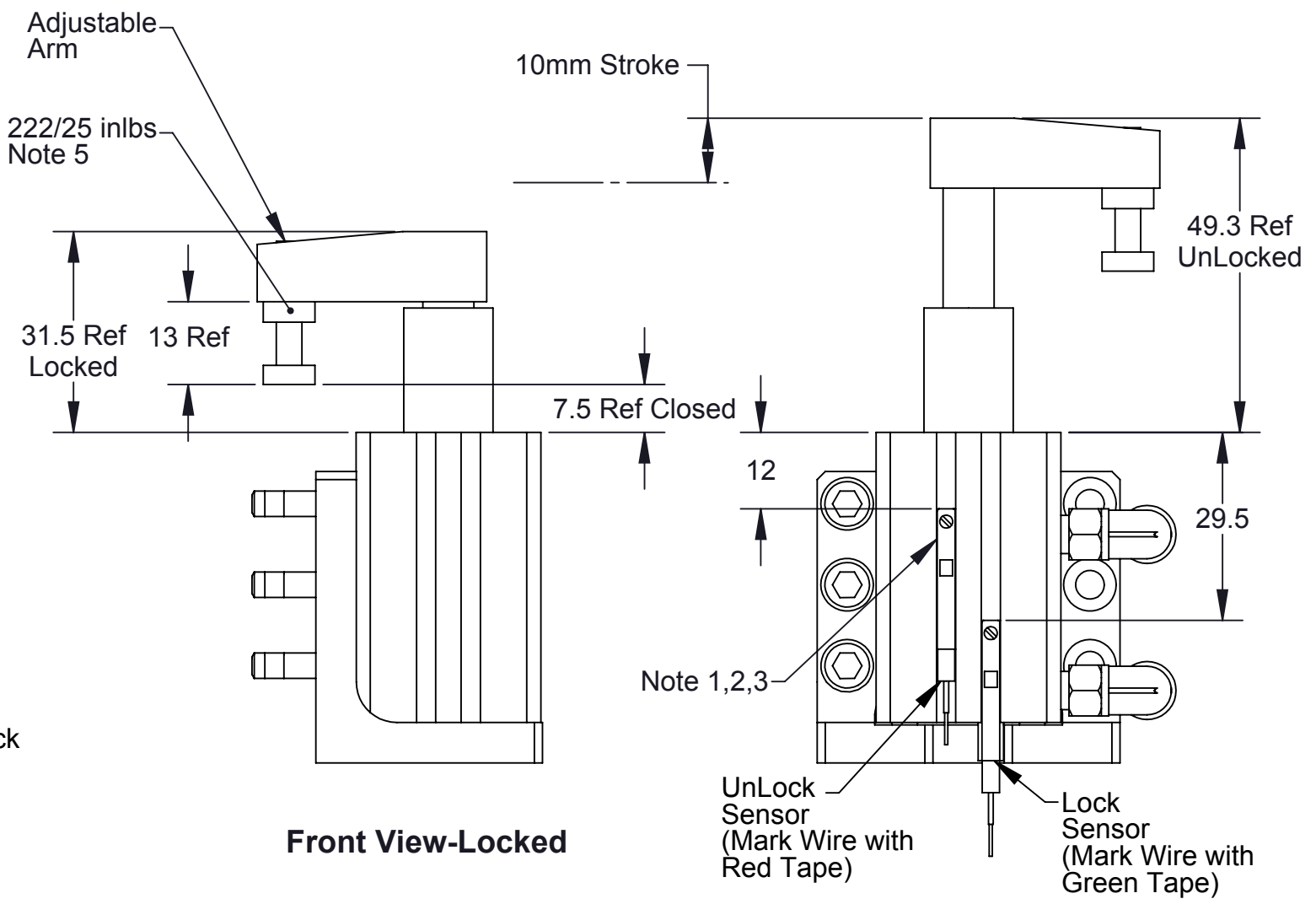
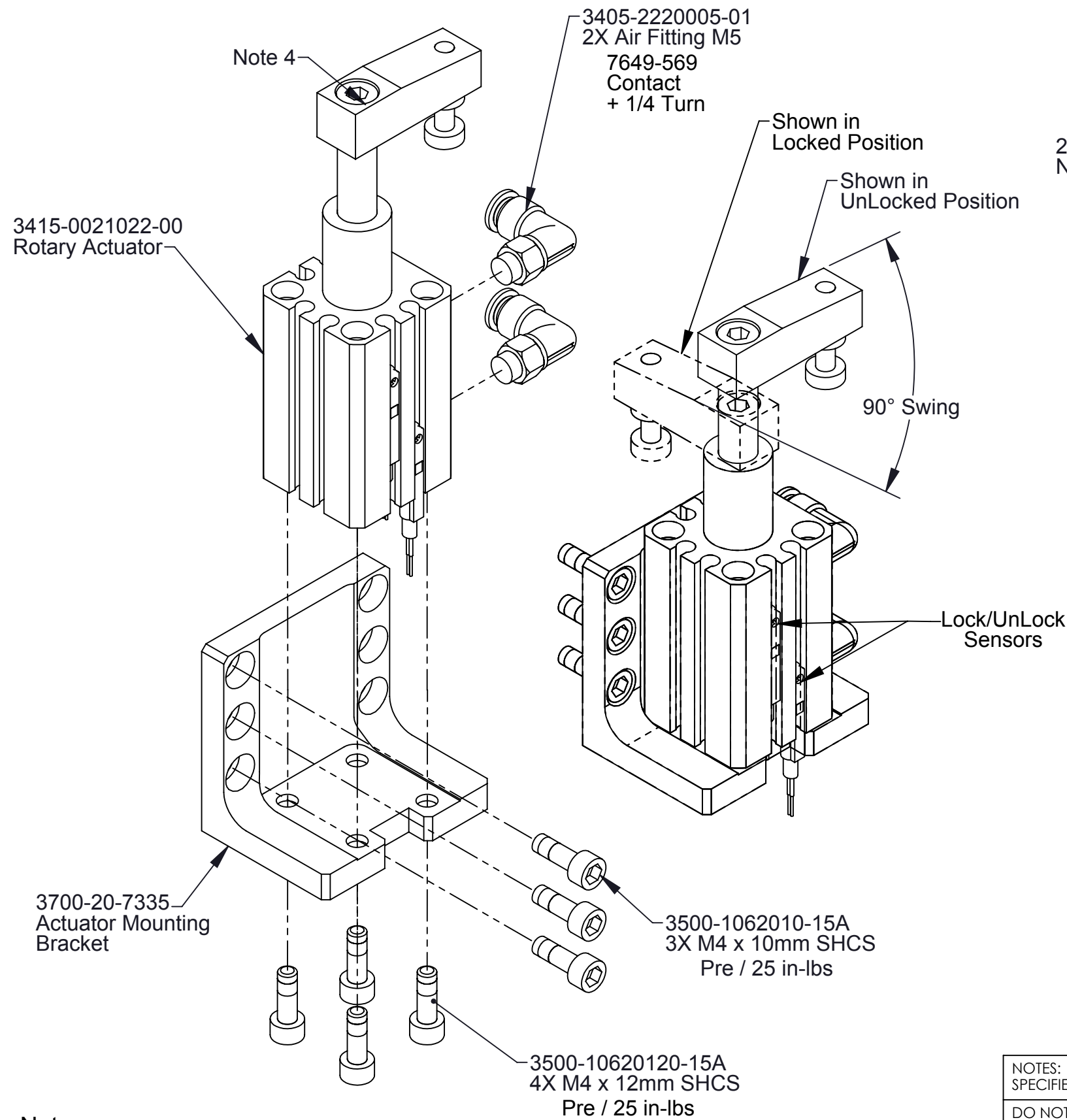


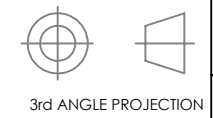
Rev.	Description	Initiator	Date
04	ECO 17039: Removed "Prox Wiring" view & added "3-wire, PNP" view.	TBC	7/20/2018



- Notes:**
1. Move sensors to position shown and tighten screw using flat head screw driver.
  2. Install sensors on proper side as shown.
  3. Wire tie loose wires.
  4. Loosen SHCS to rotate arm into correct position, torque 25-31 in-lbs
  5. Adjust arm to dimension shown-Lock in place with Lock Nut

NOTES: UNLESS OTHERWISE SPECIFIED.

DO NOT SCALE DRAWING. ALL DIMENSIONS ARE IN MILLIMETERS.



1031 Goodworth Drive, Apex, NC 27539, USA  
 Tel: +1.919.772.0115 Email: info@ati-ia.com  
 Fax: +1.919.772.8259 www.ati-ia.com  
 ISO 9001 Registered Company

PROPERTY OF ATI INDUSTRIAL AUTOMATION, INC. NOT TO BE REPRODUCED IN ANY MANNER EXCEPT ON ORDER OR WITH PRIOR WRITTEN AUTHORIZATION OF ATI.

DRAWN BY: JDB, 12/27/11		TITLE	
CHECKED BY: JW, 4/30/12		Clamp Module, LH	
PROJECT # 110516-1	SHEET 1 OF 1	SCALE 1:2	SIZE B
DRAWING NUMBER 9630-20-TSS-CM-7336		REVISION 04	